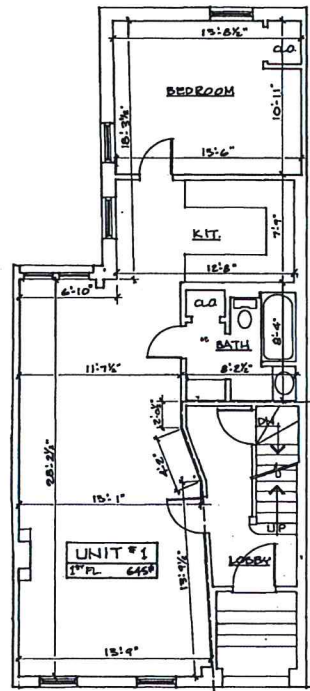
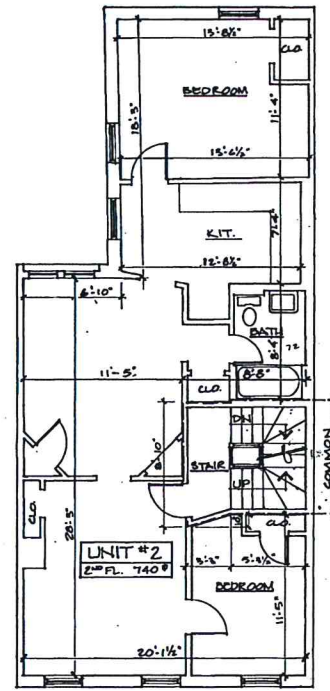


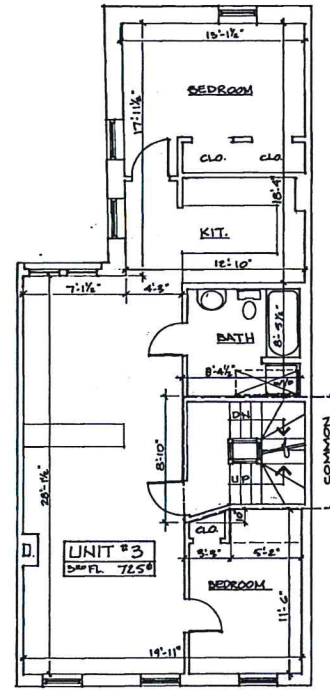
BASEMENT



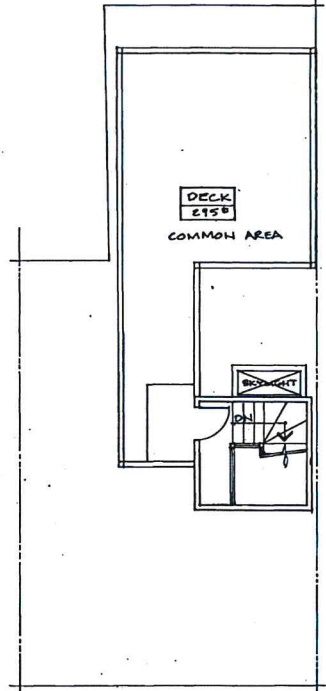
1ST FLOOR



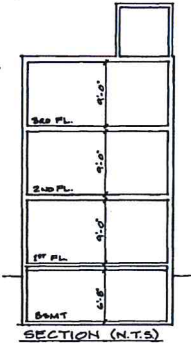
2ND FLOOR



3RD FLOOR



ROOF & DECK



SECTION (N.T.S.)

295
 Unit # 295
 12-19
 20

I HEREBY CERTIFY THAT I HAVE CONFORMED WITH THE RULES AND REGULATIONS OF THE REGISTER OF DEEDS IN PREPARING THIS PLAN. I HEREBY CERTIFY THAT THIS PLAN SHOWS THE UNIT DESIGNATION OF THIS UNIT BEING CONVEYED AND OF IMMEDIATELY ADJOINING UNITS, AND SAID PLAN FULLY AND ACCURATELY REFLECTS THE LAYOUT OF THE UNIT, ITS LOCATION, DIMENSIONS APPROXIMATE AREA, MAIN ENTRANCE AND UNBROUGHT COMMON AREA TO WHICH IT HAS ACCESS, AS BUILT.

I HEREBY CERTIFY THAT I HAVE CONFORMED TO THE RULES AND REGULATIONS OF THE REGISTER OF DEEDS IN PREPARING THE WITHIN PLANS. I FURTHER CERTIFY THAT SAID PLANS FULLY AND ACCURATELY REFLECT THE LAYOUT, LOCATION, UNIT NUMBERS AND DIMENSIONS OF THE UNITS, AS BUILT. THE BUILDING HAS NO NAME.

Stanley L. Anderson 10/23/98



17 CEDAR STREET CONDOMINIUM
 SHELESTEWI, IA
 FLOOR PLANS

▲	Unit 101/102
▲	Unit 103/104
▲	Unit 105/106
▲	Unit 107/108
▲	Unit 109/110
▲	Unit 111/112
▲	Unit 113/114
▲	Unit 115/116
▲	Unit 117/118
▲	Unit 119/120
▲	Unit 121/122
▲	Unit 123/124
▲	Unit 125/126
▲	Unit 127/128
▲	Unit 129/130
▲	Unit 131/132
▲	Unit 133/134
▲	Unit 135/136
▲	Unit 137/138
▲	Unit 139/140
▲	Unit 141/142
▲	Unit 143/144
▲	Unit 145/146
▲	Unit 147/148
▲	Unit 149/150
▲	Unit 151/152
▲	Unit 153/154
▲	Unit 155/156
▲	Unit 157/158
▲	Unit 159/160
▲	Unit 161/162
▲	Unit 163/164
▲	Unit 165/166
▲	Unit 167/168
▲	Unit 169/170
▲	Unit 171/172
▲	Unit 173/174
▲	Unit 175/176
▲	Unit 177/178
▲	Unit 179/180
▲	Unit 181/182
▲	Unit 183/184
▲	Unit 185/186
▲	Unit 187/188
▲	Unit 189/190
▲	Unit 191/192
▲	Unit 193/194
▲	Unit 195/196
▲	Unit 197/198
▲	Unit 199/200
▲	Unit 201/202
▲	Unit 203/204
▲	Unit 205/206
▲	Unit 207/208
▲	Unit 209/210
▲	Unit 211/212
▲	Unit 213/214
▲	Unit 215/216
▲	Unit 217/218
▲	Unit 219/220
▲	Unit 221/222
▲	Unit 223/224
▲	Unit 225/226
▲	Unit 227/228
▲	Unit 229/230
▲	Unit 231/232
▲	Unit 233/234
▲	Unit 235/236
▲	Unit 237/238
▲	Unit 239/240
▲	Unit 241/242
▲	Unit 243/244
▲	Unit 245/246
▲	Unit 247/248
▲	Unit 249/250
▲	Unit 251/252
▲	Unit 253/254
▲	Unit 255/256
▲	Unit 257/258
▲	Unit 259/260
▲	Unit 261/262
▲	Unit 263/264
▲	Unit 265/266
▲	Unit 267/268
▲	Unit 269/270
▲	Unit 271/272
▲	Unit 273/274
▲	Unit 275/276
▲	Unit 277/278
▲	Unit 279/280
▲	Unit 281/282
▲	Unit 283/284
▲	Unit 285/286
▲	Unit 287/288
▲	Unit 289/290
▲	Unit 291/292
▲	Unit 293/294
▲	Unit 295/296
▲	Unit 297/298
▲	Unit 299/300

Anderson Associates Architects
 516 Franklin Street, Cambridge, MA 02148 Tel: 617 (617) 487-2214

23048-298